

Broxbourne Health Monitor

June 2010

This monitor provides a digest of current issues affecting health or health services for residents of the Borough of Broxbourne. It is intended to inform Council members and interested residents and will be published on a quarterly basis.

Commentary from Cllr Jeremy Pearce, County Health Scrutiny representative

Hertfordshire NHS finances: In order to keep Hertfordshire NHS budgets on track, NHS organisations have told the scrutiny committee they will be taking the following measures: demand management and service redesign, improved clinical efficiency and productivity, reductions in running costs. It is not anticipated that there will be a cut in NHS funding overall, but demand continues to grow.

Hospital re-organisations on hold

Health Secretary Andrew Lansley has called for a review of all major NHS service reconfigurations. Mr Lansley stated that reconfigurations must meet four criteria – improve patient outcomes, consider patient choice, have support from GPs, and be based on sound clinical evidence.

centralise emergency services at Barnet and North Middlesex hospitals, whilst developing Chase Farm hospital for planned care will be subject to further review and will not proceed as planned. Plans for the development of “polyclinics” are also on hold.

Re-organisations in Hertfordshire are already underway, those elements for which a business case has not been approved will be subject to further review under the new criteria. A&E and maternity wards at the QEII in Welwyn Garden City were set to close by 2012, with the services to be centralised at Lister. A £150 million redevelopment of the Stevenage site is well under way, with a new day case and short stay surgery unit and a major expansion of the hospital’s maternity unit taking shape. The business case for the expansion of the A&E department, intensive care, operating theatres and wards is yet to be approved. NHS organisations which have already started to look at changing services will need to ensure their plans meet the four criteria set by Mr Lansley before continuing.



Chase Farm Hospital

For hospitals in North London which serve Borough residents this means the plans to



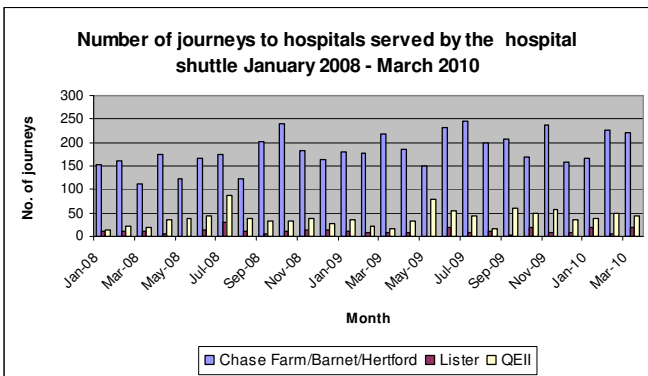
QEII hospital, Welwyn Garden City

Broxbourne Health Shuttle

The health shuttle service takes residents from their own homes to local hospitals. Hospitals served are Chase Farm, Barnet, QEII (Welwyn Garden City), Lister (Stevenage), Hertford and Princess Alexandra (Harlow). It is funded jointly by Borough Council, HCC and the NHS. Publicity initiatives to increase awareness of the service and make full use of existing capacity continue. Information about the



service is now provided on outpatient appointment letters from the QEII and Lister hospitals. Health shuttle leaflets are being distributed on request as part of the Sustrans TravelSmart initiative and are proving popular. Further leaflet distribution is to be undertaken by the WRVS, funding for publicity is included within the WRVS budget for providing the service. Usage has increased as shown in the chart below.



Broxbourne Health Forum

The Forum has been expanded to include increased representation from the NHS and council members. The council is represented by Cllrs Pearce and Seeby. The new Forum will meet for the first time on 20th July, and will consider the allocation of £10,000 health improvement funding provided by NHS Hertfordshire, and a plan to reduce smoking and obesity in the Borough. The Forum exists to:

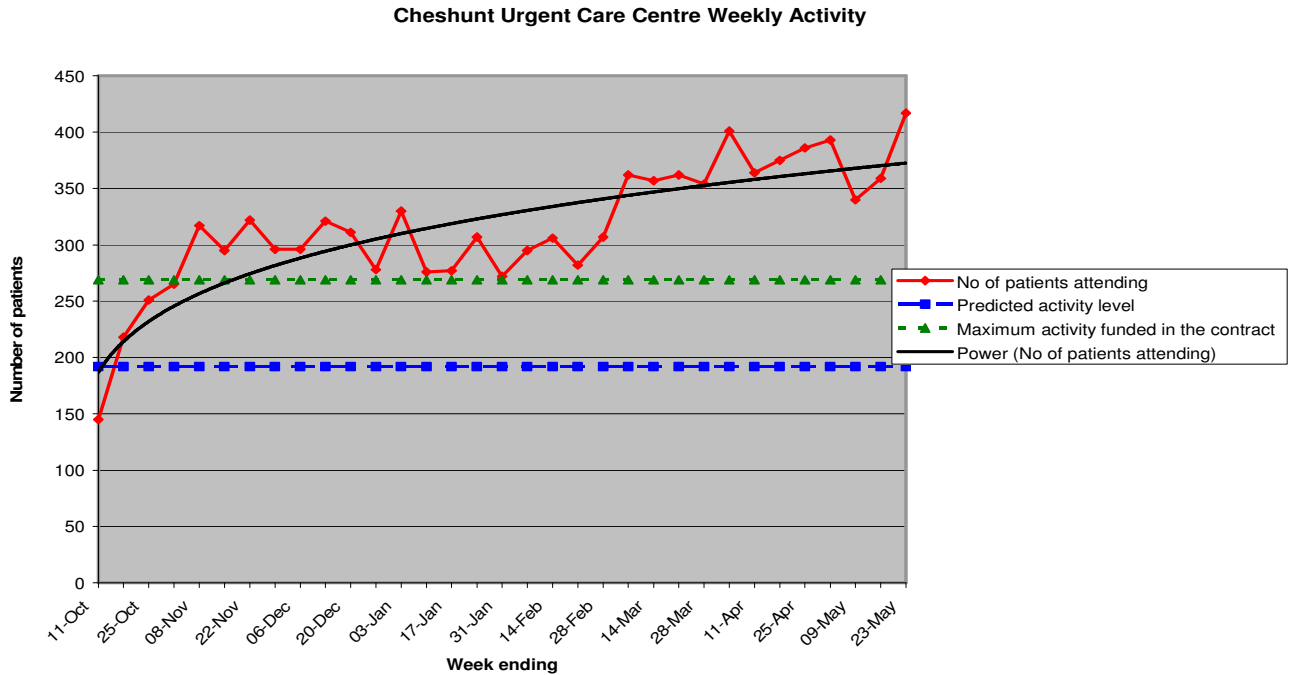
- provide a local health voice for the Borough of Broxbourne
- comment upon consultation proposals on health matters affecting Broxbourne residents and users of health services in the Borough
- raise issues of concern relating to health matters with the appropriate responsible bodies

NHS Hertfordshire

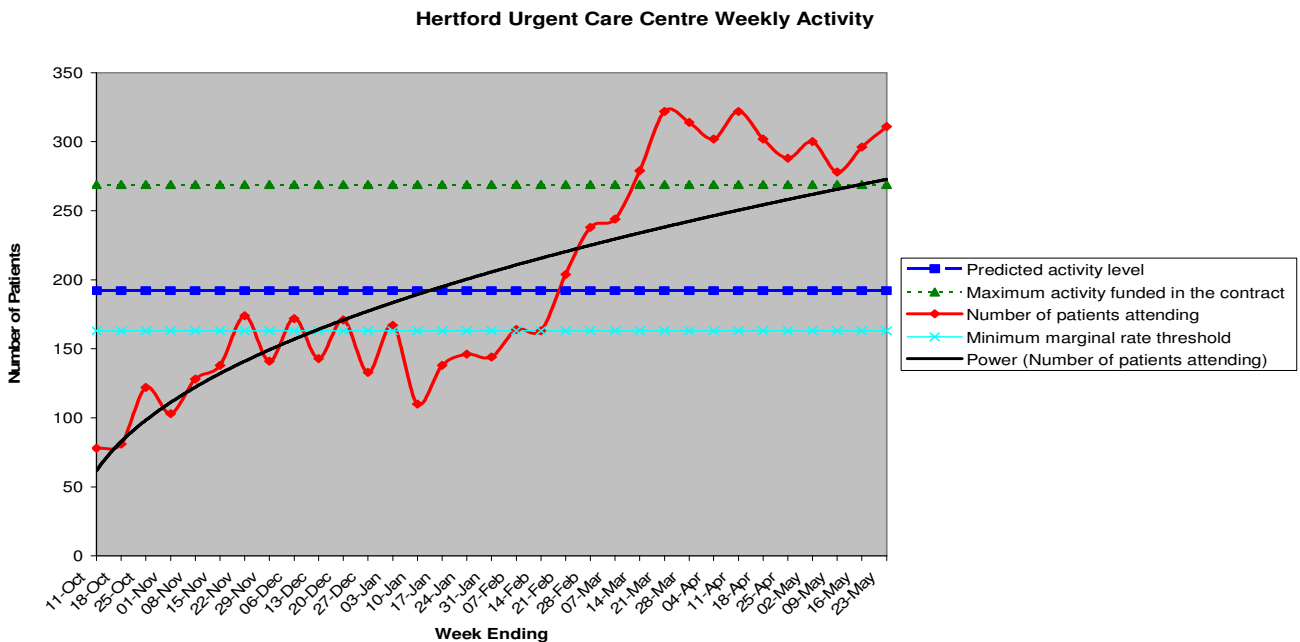
NHS Hertfordshire is the new name for Hertfordshire Primary Care Trust (PCT). NHS Hertfordshire is responsible for arranging healthcare for everyone who lives in Hertfordshire. They serve a population of just over one million, and have a budget for 2010-11 in the region of £1.7 billion. NHS Hertfordshire assesses the needs of the people of Hertfordshire, plans services to meet those needs and arranges with health care providers to deliver the services. Health care providers include: GPs, hospital trusts, dentists, community pharmacists, community health services, and mental health trusts. NHS Hertfordshire also monitors how well these providers are performing. On 25th June NHS Hertfordshire launched campaign "Lets' Use it Right" to provide information to the public about health services in Hertfordshire and to help them make the right decisions about using those services.

Urgent Care Centre

Activity at the Cheshunt urgent care centre continues to increase, as shown below:



For comparison purposes, activity at the Herford UCC is shown. A publicity drive initiated by the NHS caused a sharp increase in usage of both UCCs during March. Levels of usage are still below those at Cheshunt.



Some of the attendances at the UCC could have been dealt with by GPs. The reasons for patients attending the UCC instead of their GPs are to be followed up to ensure there is adequate provision made by GPs. One of the main reasons for the introduction of UCCs was to divert patients from accident and emergency units (A & Es). There is evidence of an 8% reduction in visits to the A & E at Chase Farm hospital by residents of Broxbourne Borough. The evaluation process to be conducted later in 2010 will include evidence about the impact on other services, including A & E units and GP practices, and information about access to these services. This evaluation will inform the decision on the continuation of the service beyond the 2 year pilot phase.