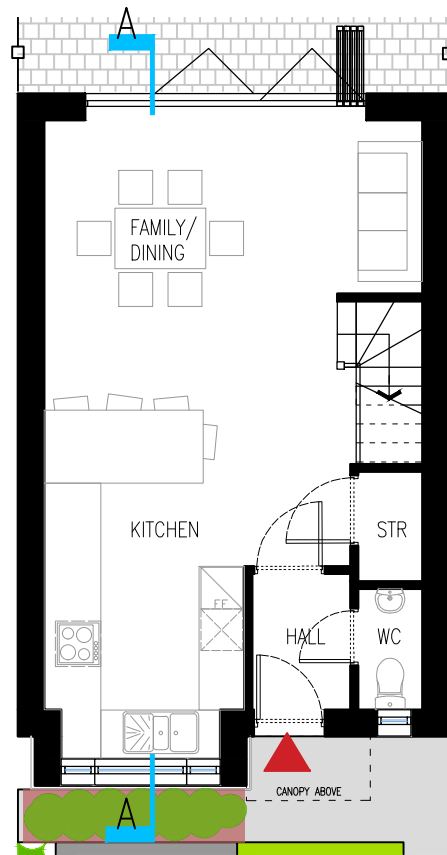
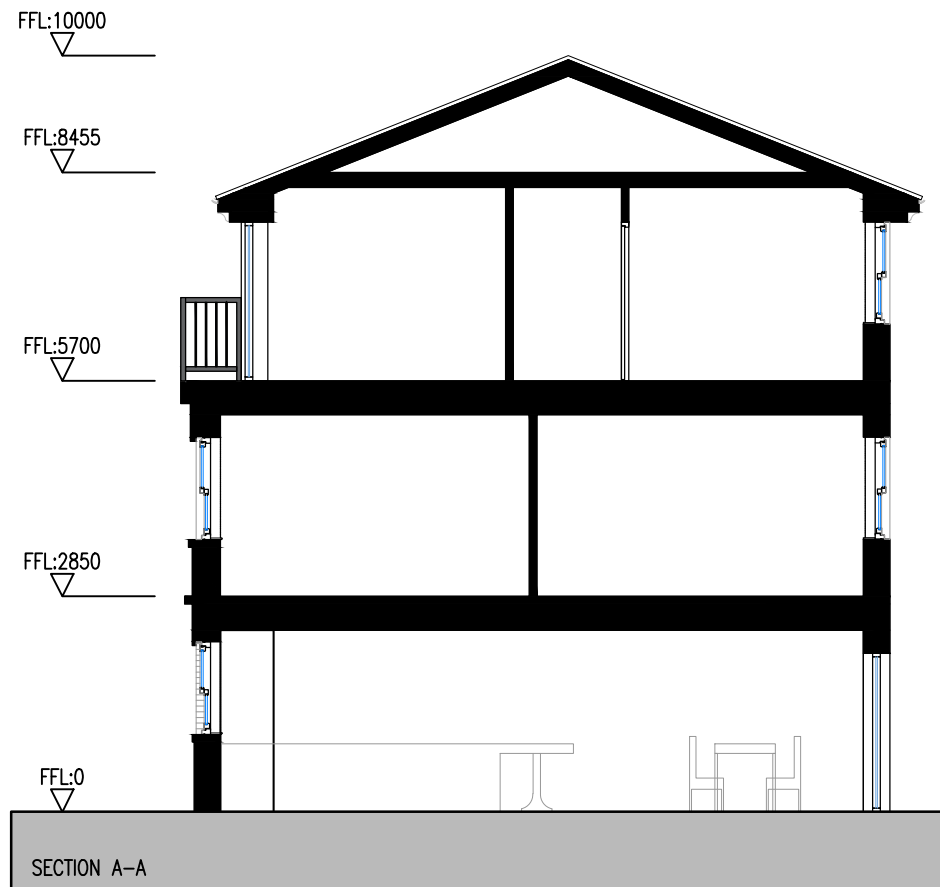
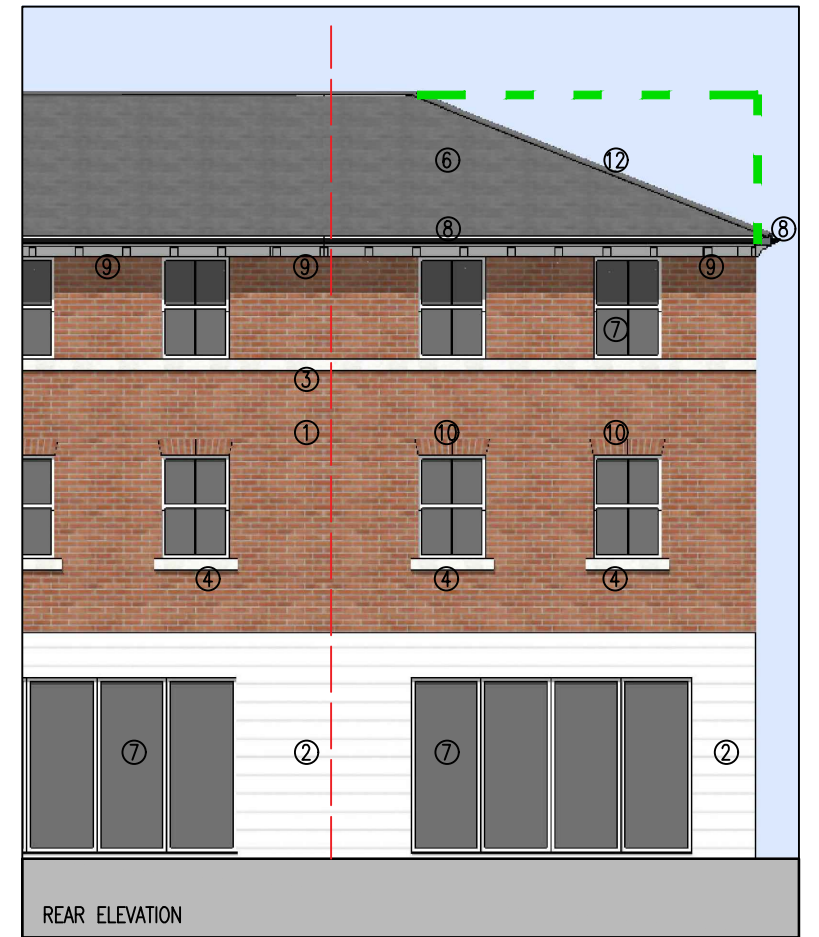
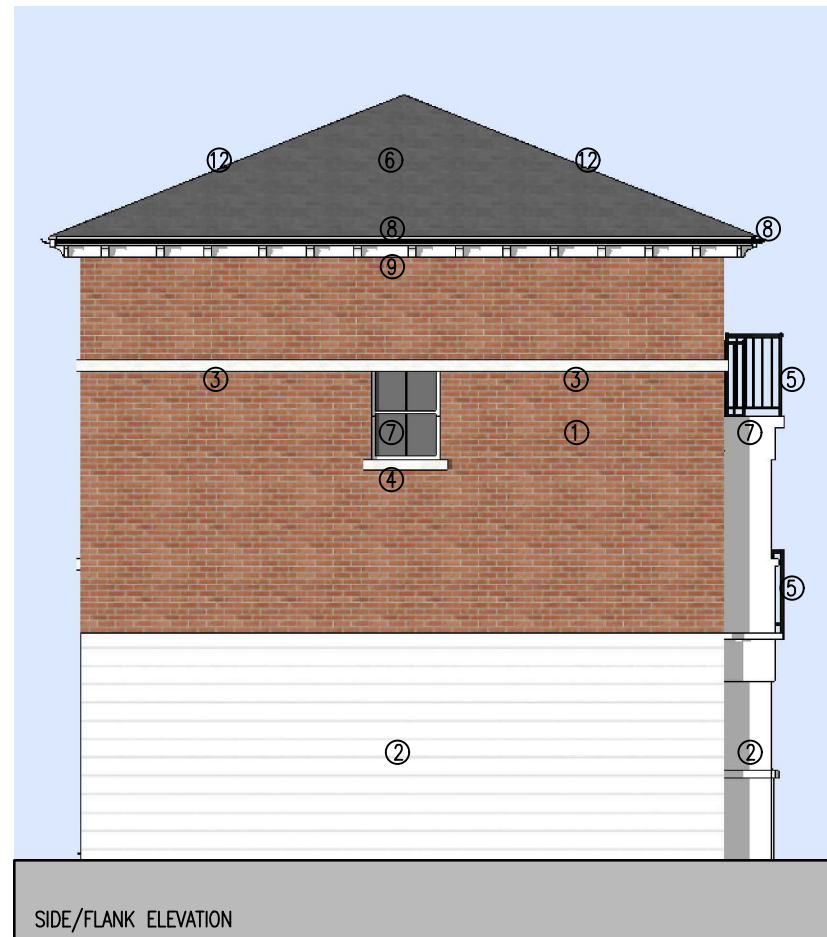


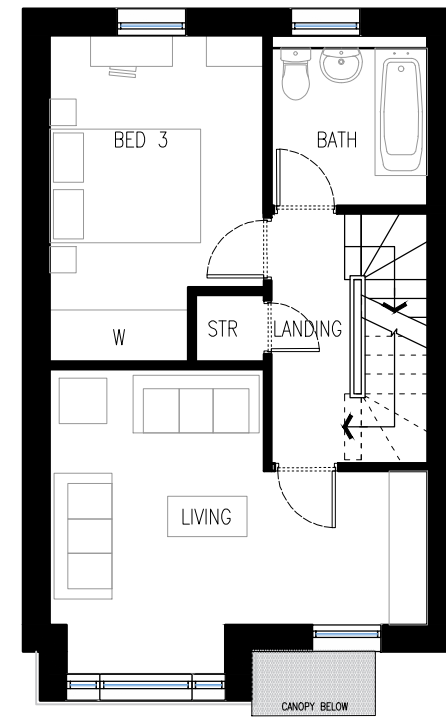


- MATERIALS**
- 1) RED FACING BRICK WORK WITH NATURAL MORTAR JOINTS
 - 2) OFF-WHITE ACRYLIC RENDER
 - 3) NATURAL PORTLAND STONE COPING/ STRING COURSE
 - 4) NATURAL PORTLAND STONE CILL
 - 5) METAL BALUSTRADE
 - 6) NATURAL SLATE ROOFING
 - 7) WHITE SLIDING SASH WINDOW FRAMES
 - 8) BLACK PVC GUTTERS + RWP
 - 9) WHITE FASCIA/ SOFFITE AND DENTIL FEATURE
 - 10) FLAT ARCH DETAIL ABOVE WINDOWS
 - 11) MATCHING RIDGE AND HIP TILES

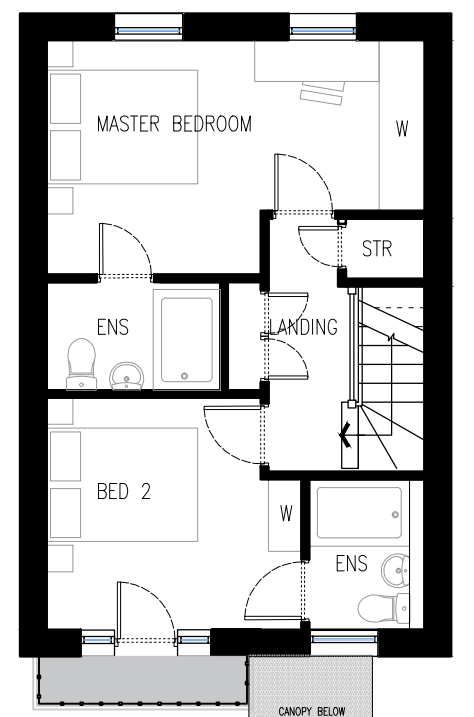
GREEN DASHED LINE INDICATES TERRACED ROOF LINE



GF GIA: 40.37 m²
GF GEA: 46.87 m²



1F GIA: 40.37 m²
1F GEA: 46.87 m²



2F GIA: 39 m²
2F GEA: 45.05 m²

| | | | |
|-------|----|-----|-----|
| 1:50 | 1 | 2.5 | 5m |
| 1:100 | 2 | 5 | 10m |
| 1:200 | 4 | 10 | 20m |
| 1:500 | 10 | 25 | 50m |