

BOROUGH OF BROXBOURNE
ROAD TRAFFIC REGULATION ACT 1984

THE BOROUGH OF BROXBOURNE (VARIOUS ROADS)
(DISABLED PERSONS' PARKING PLACES) ORDER No. 2 2016

THE COUNCIL OF THE BOROUGH OF BROXBOURNE, pursuant to arrangements made with the Hertfordshire County Council under Section 19 of the Local Government Act 2000 and the Local Authorities (Arrangements for the Discharge of Functions) (England) Regulations 2012, and in exercise of its powers under Sections 32 and 35 of the Road Traffic Regulation Act 1984, (hereinafter called "the 1984 Act") and of all other enabling powers, and after consultation with the Chief Officer of Police in accordance with Part III of Schedule 9 of the Act of 1984, hereby make the following Order:

1(1) In this Order

"Disabled Person's Badge" has the same meaning as in The Local Authorities' Traffic Orders (Exemptions for Disabled Persons) (England) Regulations 2000.

"Disabled Person's Vehicle" has the same meaning as in Section 142(1) of the 1984 Act

"Driver", in relation to a vehicle waiting in a Parking Place, means the person driving the vehicle at the time it was left in the Parking Place

"Parking Place" means any part of a road authorised by this Order to be used as a parking place

(2) For the purposes of this Order a vehicle shall be regarded as displaying a Disabled Person's Badge in the relevant position if:

- (i) in the case of a vehicle fitted with a dashboard or fascia panel, the badge is exhibited thereon so that the serial number and the date of expiry of the badge is legible from outside the vehicle; or
- (ii) in the case of a vehicle not fitted with a dashboard or fascia panel, the badge is exhibited in a conspicuous position on the vehicle so that the serial number and the date of expiry of the badge is legible from outside the vehicle.

2(1) Those parts of the roads specified in Column 1 of Schedule 1 and shown for identification purposes only in the plan in the Schedule to this Order are authorised to be used in a position specified in Column 2 of the said Schedule 1 and subject to the following provisions of this Order, as Parking Places at any time for Disabled Person's Vehicles which display in the relevant position a Disabled Person's Badge.

(2) Nothing in paragraph (1) of this Article shall restrict the power of the Council, for preventing obstruction of the roads, by order, or by notice on the occasion of any public procession, rejoicing or illumination, or when the roads are thronged or liable to be obstructed, to close the Parking Place.

3 Where in Column 1 of Schedule 1 to this Order a Parking Place is described as available for a Disabled Person's Vehicle which displays in the relevant position a Disabled Person's Badge, the Driver of a vehicle shall not permit it to wait in that Parking Place unless it is:

- (a) a Disabled Person's Vehicle on which is displayed in the relevant position a Disabled Person's Badge, and
- (b) wholly within the limits of the Parking Place.

- 4 A Driver of a vehicle shall not use a Parking Place:-
 - (a) so as unreasonably to prevent access to any premises adjoining the road, or the use of the road by other persons, or so as to be a nuisance;
 - (b) when for preventing obstruction of the road the Council shall by order or by notice made on the occasion of any public procession, rejoicing or illumination or when the roads are thronged or liable to be obstructed have closed that Parking Place and exhibited notice of such closing on or near the Parking Place.
- 5 The Driver of a motor vehicle using a Parking Place shall stop the engine as soon as the vehicle is in a position in the Parking Place, and shall not start the engine except when about to change the position of the vehicle in or to depart from the Parking Place.
- 6 No person shall use a vehicle, while it is in a Parking Place, in connection with the sale of any article to persons in or near the Parking Place or in connection with the selling or offering for hire of his skill or service.
- 7 Subject to the provision hereto, when a vehicle is left in a Parking Place in contravention of any of the provisions contained in Articles 3 and 4 of this Order a person authorised in that behalf by the Council may remove the vehicle or arrange for it to be removed from that Parking Place provided that when a vehicle is waiting in a Parking Place in contravention of the provisions of Articles 3 and 4 of this Order, a person authorised in that behalf by the Council may alter or cause to be altered the position of the vehicle in order that its position shall comply with that provision.
- 8 Any person removing a vehicle or altering its position by virtue of Article 7 of this Order may do so by towing or driving the vehicle or moving the vehicle in such other manner as he may think necessary and may take such measures in relation to the vehicle as he may think necessary to enable him to remove it or alter its position, as the case may be.
- 9 When a person authorised by the Council removes or makes arrangements for the removal of a vehicle from a Parking Place by virtue of Article 7 of this Order, he shall make such arrangements as may be reasonably necessary for safe custody of the vehicle.
- 10 The lengths of road specified in Schedule 2 of this Order are no longer authorised for the sole parking of disabled persons vehicles.
- 11 The provisions of The Borough of Broxbourne (Control of Parking) (Consolidation) Order 2013 ("the 2013 Order") are hereby revoked but only in so far as they are affected by the restrictions imposed by this Order.
- 12 Paragraph 11 of Schedule 1 of the Borough of Broxbourne (Various Roads) (Disabled Persons Parking Places) Order No. 2015 is revoked.
- 13 Paragraphs 1 & 7 of Schedule 1 of the Borough of Broxbourne (Various Roads) (Disabled Persons Parking Places) Order No. 2016 is revoked.
- 15 This Order shall come into operation on 10 November 2016 and may be cited as the Borough of Broxbourne (Various Roads) (Disabled Persons' Parking Places) Order No.2 2016.

SCHEDULE 1

Column 1	Column 2
Description of the Parking Place	Position in which the vehicle may wait
WINFORD DRIVE, BROXBOURNE west side from a point in line with the northern flank wall of No. 166 Winford Drive southward for a distance of 5.5m.	Parallel and adjacent to the kerb
BELTONA GARDENS, CHESHUNT east side from a point in line with the boundary between Nos. 22 & 23 Beltona Gardens southward for a distance of 6m.	Parallel and adjacent to the kerb
BRAMPTON CLOSE, CHESHUNT west side from a point in line with the boundary between Nos. 75/76 & 77/79 Brampton Close eastward for a distance of 2.6m.	Lengthwise at 90° to the kerb in a North / South direction
ENDEAVOUR ROAD, CHESHUNT north side from a point in line with the boundary between Nos. 22 & 24 Endeavour Road eastward for a distance of 5.5m	Parallel and adjacent to the kerb
GROVEDALE CLOSE, CHESHUNT south side from a point 1.5m west of a point in line with the eastern flank wall of No. 18 Grovedale Close westward for a distance of 6.0m	Parallel and adjacent to the kerb
HAMMOND CLOSE, CHESHUNT east side from a point in line with the southern flank wall of No. 14 Hammond Close northward for a distance of 3.0m.	Lengthwise at 90° to the kerb in a East / West direction
HIGH STREET, CHESHUNT west side from a point 1.5m north of a point in line with the northern flank wall of No. 140 High Street, Cheshunt northward for a distance of 5.0m.	Parallel and adjacent to the kerb
LORDSHIP ROAD, CHESHUNT east side from a point 1.2m south of a point in line with the boundary between Nos. 31 & 33 Lordship Road southwards for a distance of 5.0m	Parallel and adjacent to the kerb
McGREDDY, CHESHUNT east side from a point 0.6m north of a point in line with the boundary between Nos. 38 & 39 McGredy southward for a distance of 2.5m.	Lengthwise at 90° to the kerb in a East / West direction
PERRYSFIELD ROAD, CHESHUNT east side from a point in line with the boundary between Nos. 123 & 125 Perrysfield Road northward for a distance of 6.0m.	Parallel and adjacent to the kerb

<p>PERRYSFIELD ROAD, CHESHUNT north side from a point in line with the boundary between Nos. 331 & 333 Perrysfield Road westwards for a distance of 6.0m.</p>	<p>Parallel and adjacent to the kerb</p>
<p>RUSSELLS RIDE, CHESHUNT south side from a point in line with the eastern flank wall of No. 102a Russells Ride westward for a distance of 6.0m.</p>	<p>Parallel and adjacent to the kerb</p>
<p>SHORTMEAD DRIVE, CHESHUNT north side from a point 1.5m east of a point in line with the eastern flank wall of Nos. 36 & 40 Shortmead Drive westward for a distance of 6.0m.</p>	<p>Parallel and adjacent to the kerb</p>
<p>SMARTS GREEN, CHESHUNT south side from a point in line with the boundary between Nos. 47 & 49 Smarts Green eastward for a distance of 2.4m.</p>	<p>Lengthwise at 90° to the kerb in a North / South direction</p>
<p>WHEATCROFT, CHESHUNT east side from a point in line with the boundary between Nos. 100 & 101 Wheatcroft northward for a distance of 2.4m.</p>	<p>Lengthwise at 90° to the kerb in a East / West direction</p>
<p>WINDMILL LANE, CHESHUNT north side from a point 0.3m west of a point in line with the boundary between Nos.139 & 141 Windmill Lane eastward for a distance of 6.0m.</p>	<p>Parallel and adjacent to the kerb</p>
<p>CASTLE ROAD, HODDESDON east side from a point 2.0m north of a point in line with the northern flank wall of No. 41 Castle Road northward for a distance of 2.4m.</p>	<p>Lengthwise at 90° to the kerb in a North / South direction</p>
<p>CHAUCER WAY, HODDESDON east side from a point 0.4m south of a point in line with the boundary between Nos. 53 & 55 Molesworth southward for a distance of 3.4m.</p>	<p>Lengthwise at 90° to the kerb in a East / West direction</p>
<p>JERSEY CLOSE, HODDESDON north side from a point in line with the boundary between Nos. 25 & 27 Jersey Close westward for a distance of 6.0m.</p>	<p>Parallel and adjacent to the kerb</p>
<p>MURCHISON ROAD, HODDESDON north side from a point in line with the boundary between Nos. 4 & 6 Murchison Road westward for a distance of 6.0m.</p>	<p>Parallel and adjacent to the kerb</p>
<p>FARRIERS END, TURNFORD east side from a point 1.3m south of a point in line with the northern front wall of No. 4 Farriers End southward for a distance of 5.5m.</p>	<p>Parallel and adjacent to the kerb</p>

EDINBURGH CRESCENT, W. CROSS west side from a point 1.0m north of a point in line with the boundary between Nos. 77 & 79 southward for a distance of 2.4m.

Lengthwise at 90° to the kerb in a West / East direction

PARK LANE, W. CROSS south side from a point in line with the boundary between Nos. 5 & 7 Park Lane eastward for a distance of 6.0m.

Parallel and adjacent to the kerb

SCHEDULE 2

Description of those parking places to be removed

St Augustines Drive, Broxbourne east side from a point in line with the boundary between Nos. 17 & 19 St Augustines Drive southward for a distance of 3 metres.

St Augustines Drive, Broxbourne west side from a point in line with the northern flank wall of No.9 St Augustines Drive southward for a distance of 6 metres.

Bullwell Crescent, Cheshunt south side from a point 10.0m south east of a point in line with the northern flank wall of Nos. 72 Bullwell Crescent south eastward for a distance of 6 metres.

Chadwell Avenue, Cheshunt west side from a point 3 m east of a point in line with the eastern flank wall of Nos. 35 – 41 Chadwell Avenue eastward for a distance of 2.4 metres.

Hawthorne Avenue, Cheshunt west side from a point 2.3m north of a point in line with the boundary between Nos. 37 & 39 Hawthorne Avenue southward for a distance of 6.0 metres.

Russells Ride, Cheshunt west side from a point 1m north of a point in line with the southern flank wall of No.173 Russells Ride northward for a distance of 6 metres.

Shortmead Drive, Cheshunt east side from a point in line with the southern flank wall of No. 6 Shortmead Drive southward for a distance of 6 metres.

Danemead, Hoddesdon east side from a point 0.7m north of a point in line with the southern flank wall of No.12 Danemead northward for a distance of 2.4 metres.

Foxton Road, Hoddesdon south side from a point 1m north east of a point in line with the western flank wall of No. 32 Foxton Road north eastward for a distance of 6 metres

Haselwood Avenue, Hoddesdon east side from a point 1m north of a point in line with the southern rear wall of No. 9 Burford Place northward for a distance of 6 metres.

Lampits, Hoddesdon north side from a point 3m west of a point in line with the most western flank wall of Nos.245 - 267 Lampits westward for a distance of 2.4 metres

Lea Road, Hoddesdon southeast side from a point 9m northeast of a point in line with south-western front wall of No.92 Old Highway north-eastward for a distance of 6 metres.

Walton Road, Hoddesdon north-east side from a point 1.3m south of the southern flank wall of No.2 Walton Road northward for a distance of 6 metres.

Longcroft Drive, Waltham Cross north side from a point in line with the boundary between Nos. 57 & 59 Longcroft Drive eastward for a distance of 6 metres.

Royal Avenue, Waltham Cross west side from a point in line with the northern flank wall of No.55 Swanfield Road northwards for a distance of 6 metres.

ENDEAVOUR ROAD

24

(22)

14

BRAMPTON CLOSE

81
83

82
84

(12)

Marked
~~AUTHORISED SIGNATORY~~

WINFORD DRIVE

178

174

172

166

170

(168)

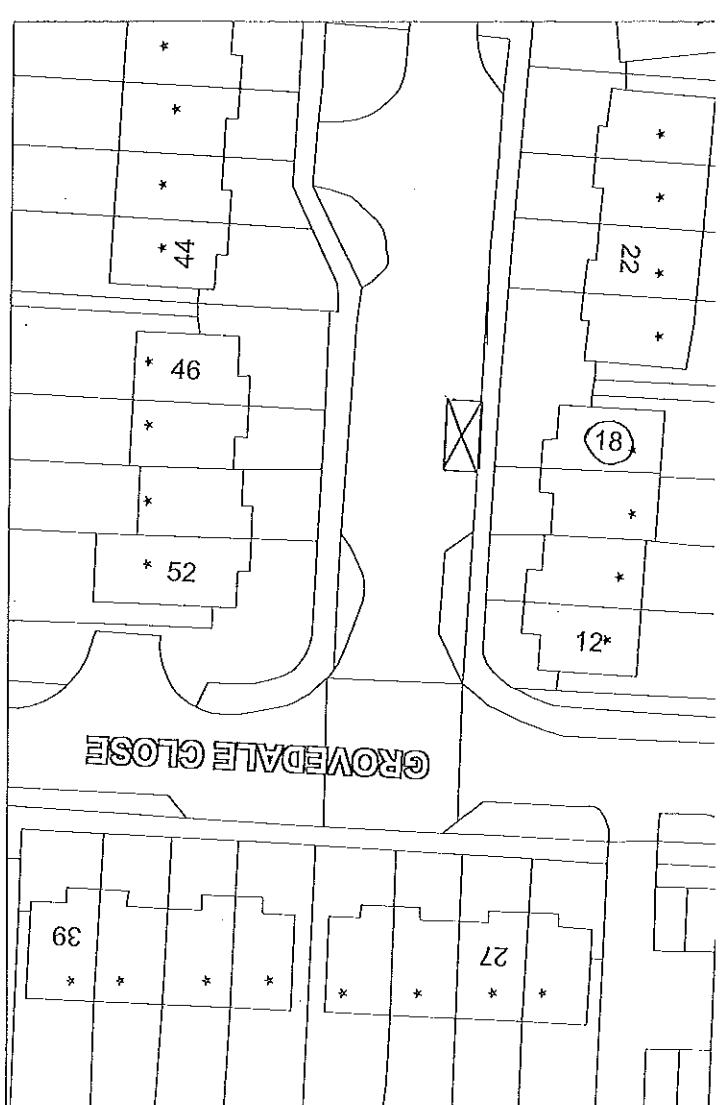
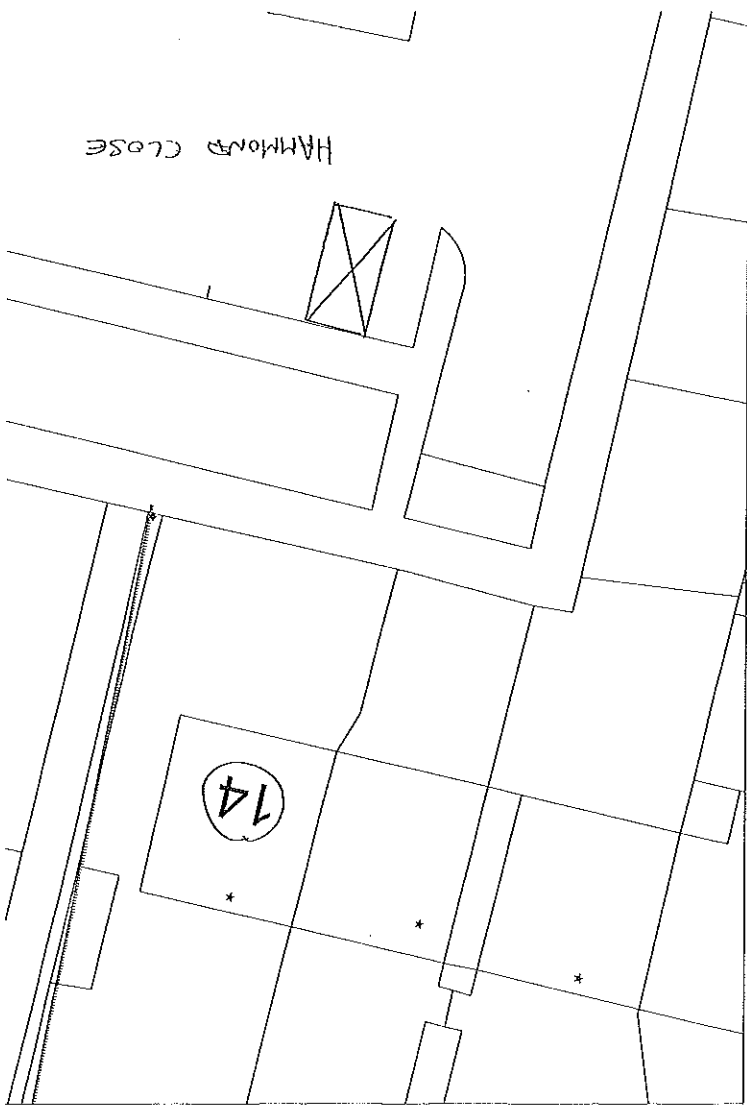
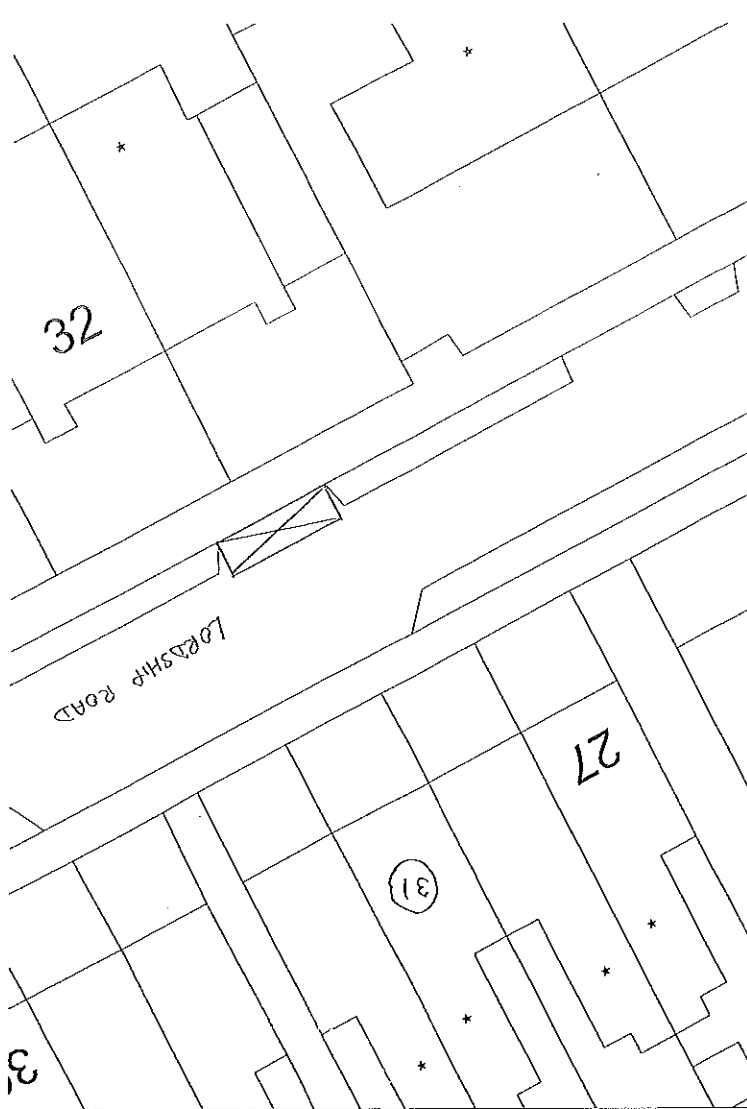
BELTONA GARDENS

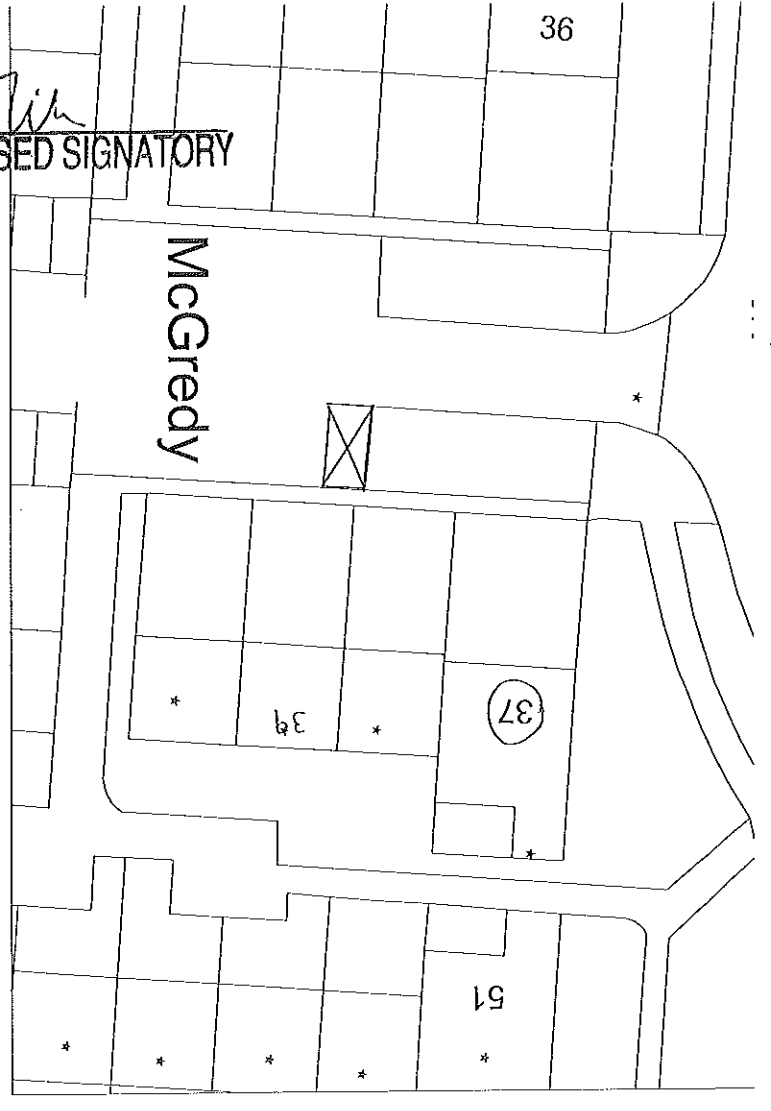
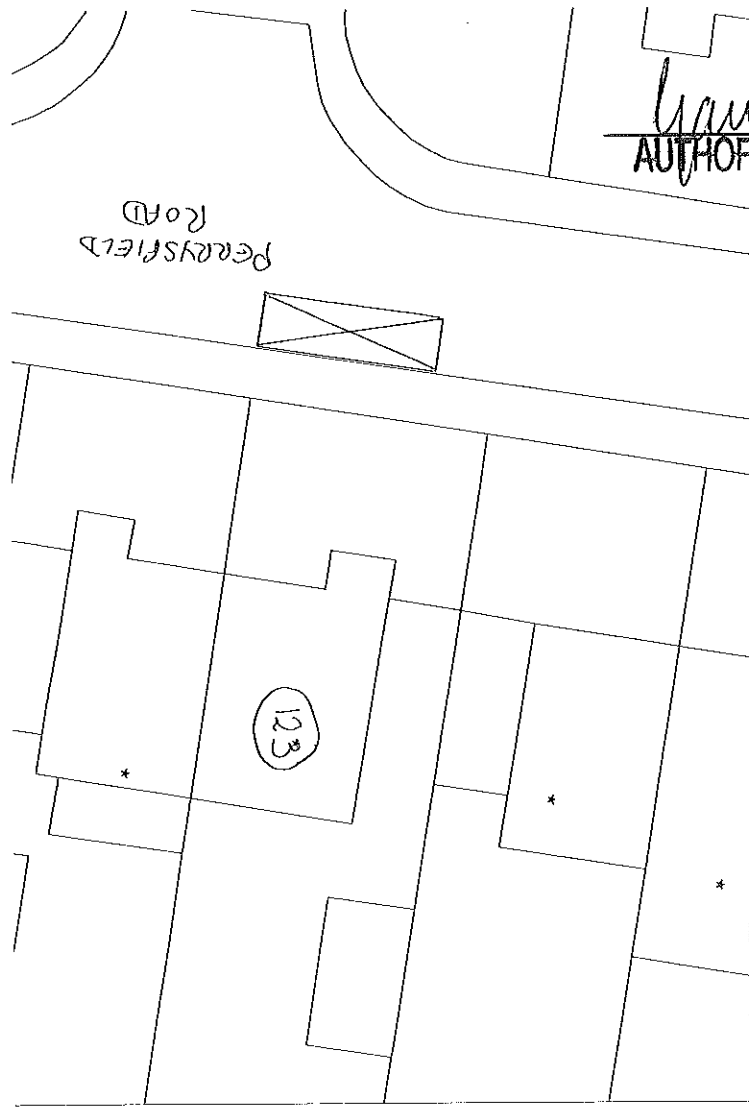
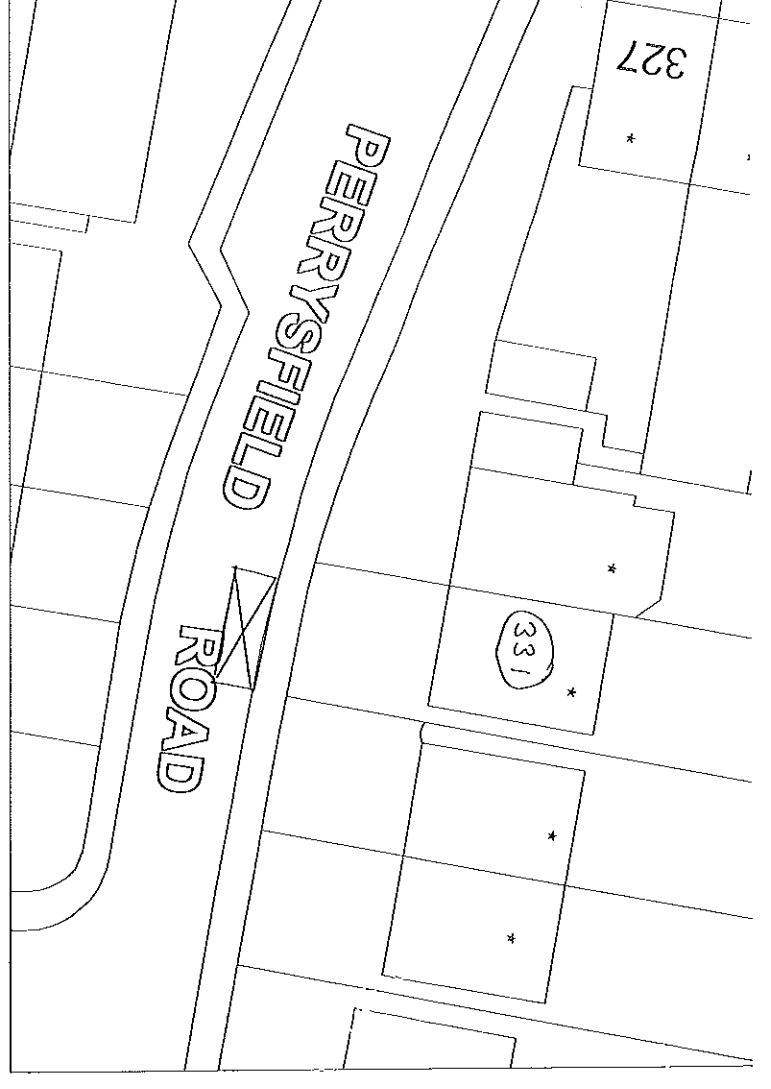
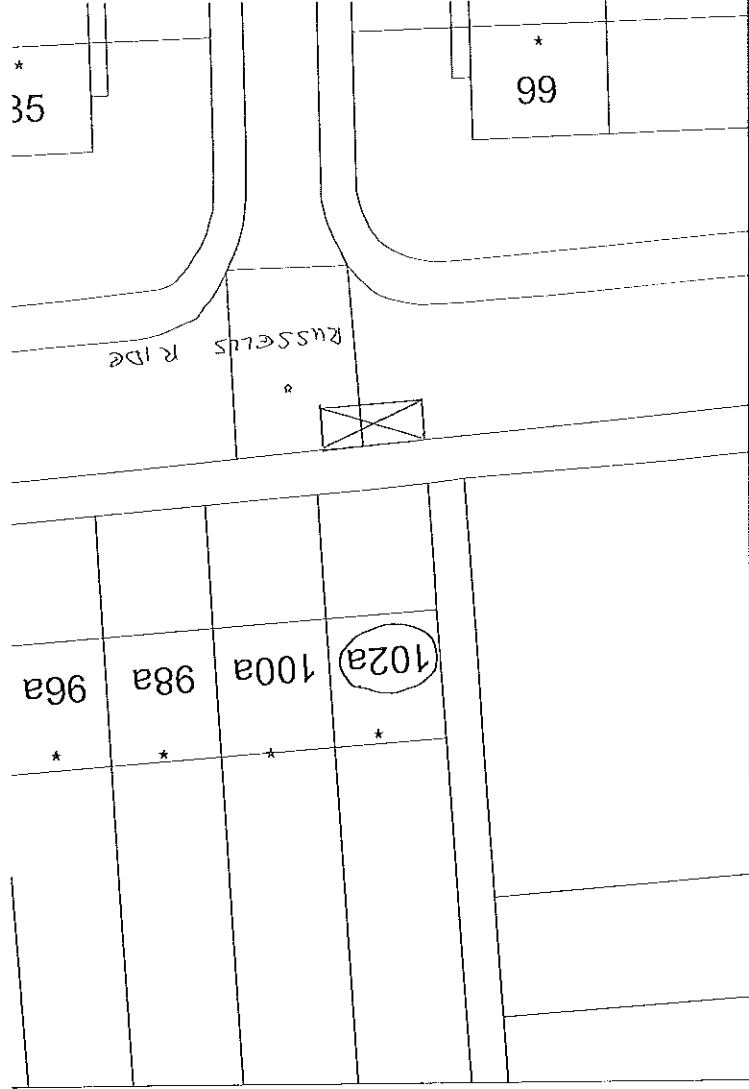
20

(22)

25

26





Laura
 AUTHORIZED SIGNATORY

MURCHISON ROAD

2

(7)

JERSEY CLOSE

13

23

(25)

El Sub Sta

MOL

Lawson
AUTHORISED SIGNATORY

MOLESWORTH

CHAUCER WAY

61

(55)

49

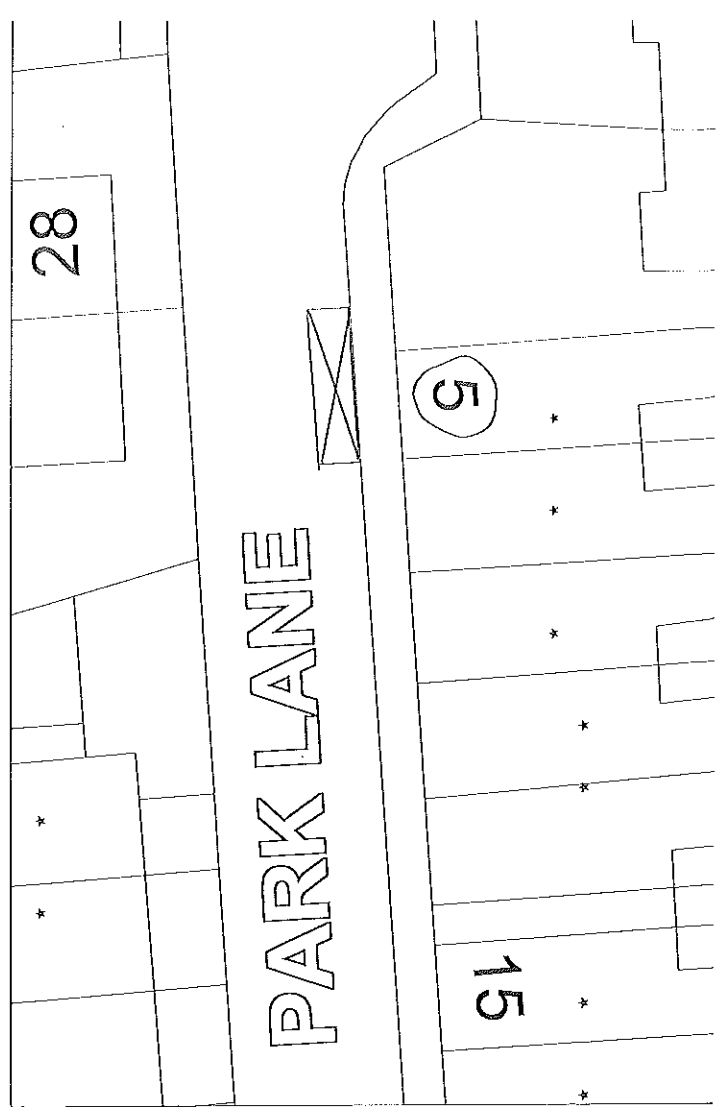
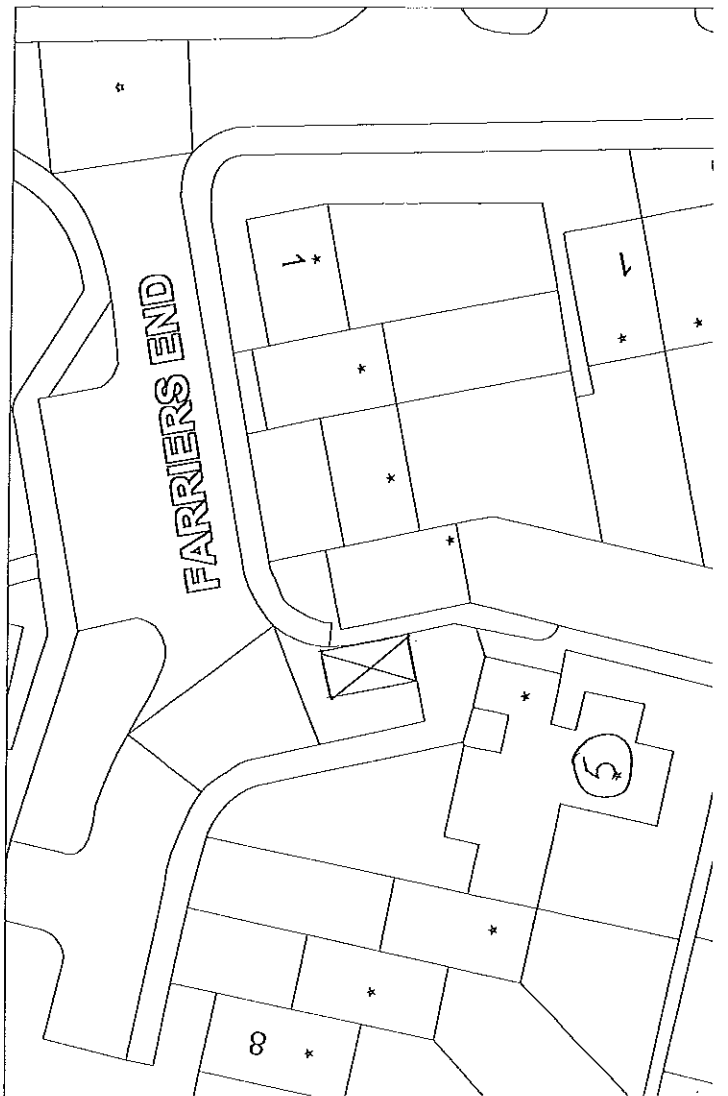
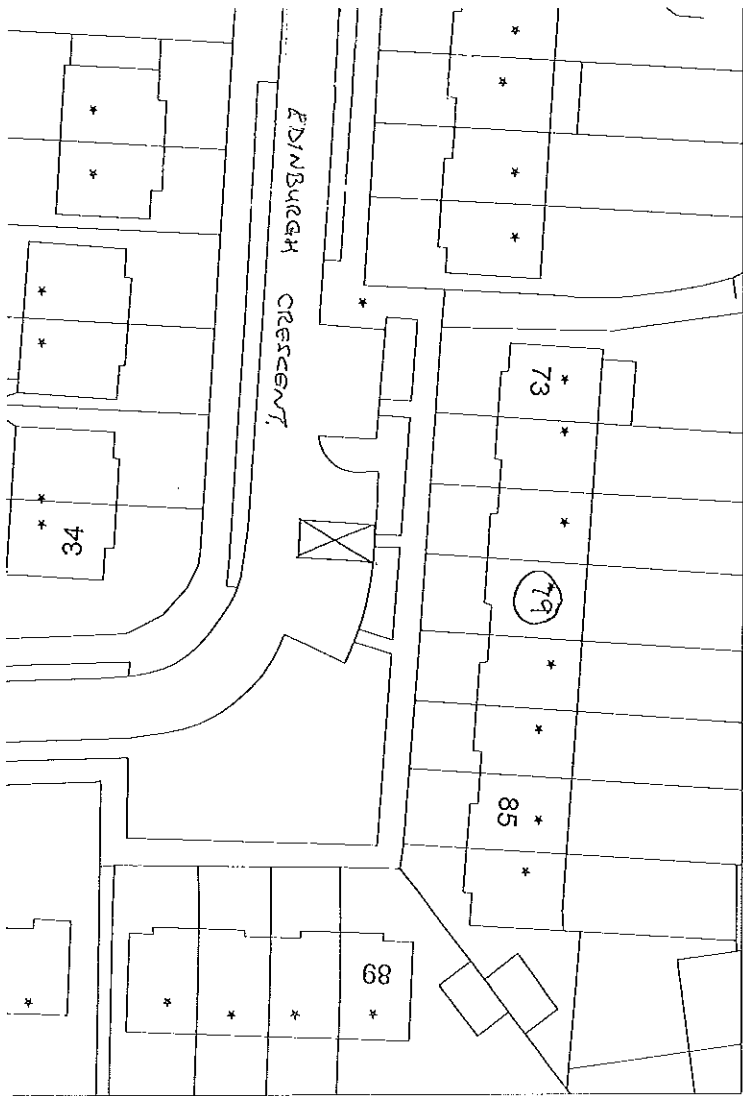
47

38

CASTLE ROAD

47

(43)



IN WITNESS whereof the Common Seal of the Council of the Borough of Broxbourne has hereunto been affixed on this 7 November 2016

The Common Seal of the COUNCIL OF THE BOROUGH OF BROXBOURNE was hereunto affixed in the presence of:-



Gawade

Authorised Signatory

Dated 7 November 2016

ROAD TRAFFIC REGULATION ACT 1984

THE BOROUGH OF BROXBOURNE
(VARIOUS ROADS) (DISABLED
PERSON'S PARKING PLACES)
ORDER No. 2 2016

